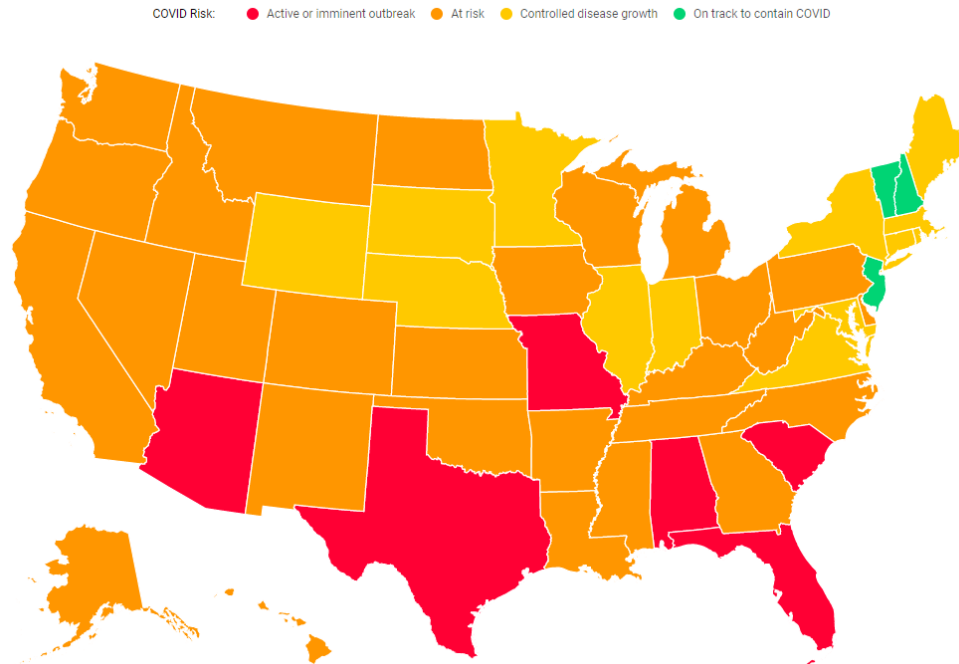


COVID Update: July 28th

Jessica Kelly, MPH, CHES
Health Educator

How Many Cases?

- ▶ How many cases in NJ?
- ▶ How many cases in Livingston?



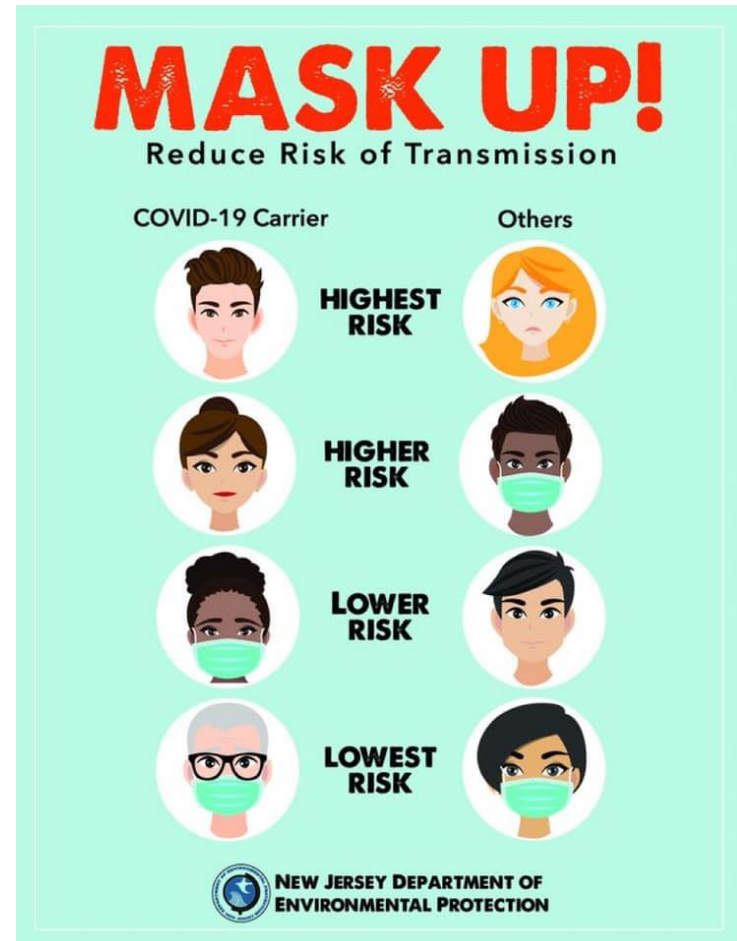
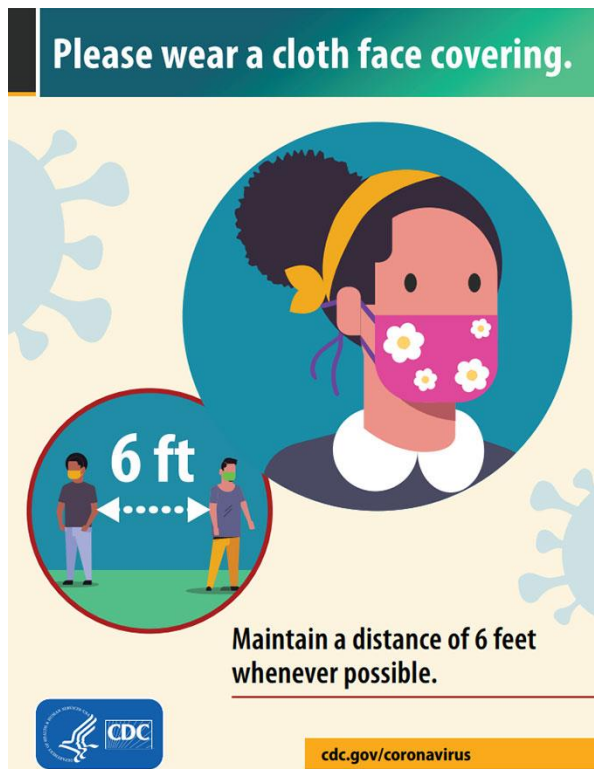
Contact Tracing

- ▶ If you have been identified as having been in close contact with someone who has Covid-19, you will be contacted by someone from the Health Department or a trained contact tracer. The contact tracer will ask you to stay at home and self quarantine for a given time period based on your exposure.



Face Coverings Outdoors

- ▶ With some exceptions face coverings should also be worn outdoors when social distancing is not being maintained



Changes to Guidance

- ▶ Guidance for those who tested positive or negative has been updated
- ▶ If you tested positive should you be retested to see if you no longer have Covid?
- ▶ Keep in mind pets can get Covid too



Traveling Outside NJ

- ▶ Travelers who are returning to NJ from certain states are being asked to quarantine for 2 weeks when they return.
- ▶ Information can be found on the New Jersey Department of Health's website at [covid19.nj.gov](https://www.nj.gov/health/covid19) and out of country at wwwnc.cdc.gov/travel
- ▶ These travel websites are posted on the Livingston Township website



Is it Safe?

- ▶ Keep in mind these factors when visiting places/activities
 - Length of time
 - How many people
 - Social distancing
 - Indoors or Outdoors
 - Sharing of items/equipment
 - Transmission of the virus occurring in the community
 - What precautions are being taken



Protecting Yourself

- ▶ Wear a face covering
- ▶ Don't touch your face
- ▶ Keep your hands clean
- ▶ Clean/Disinfect commonly touched surfaces
- ▶ Order online or contactless pickup
- ▶ Maintain social distance
- ▶ Visit stores at a time when they will be less crowded



Where can I find More Information?

- ▶ **Livingston Township Website (updated regularly)**
livingstonnj.org

Includes: Information on Covid, Testing Locations, and Available Resources

Additional Resources

CDC– cdc.gov

NJ Department of Health: nj.gov/health

NJ Poison Control Center and 211 Hotlines

(For Questions about COVID–19)

Call: 2–1–1

Call (24/7): 1–800–962–1253



Questions

